



BALDOYLE GA01  
KEY PLAN  
SCALE N.T.S.

REF: 'X1'

URBIS AXIA POLE MOUNTED LIGHT FITTING  
LIGHT TYPES 'X1' & 'X5'



REFER TO LIGHTING SCHEDULE

NOTE

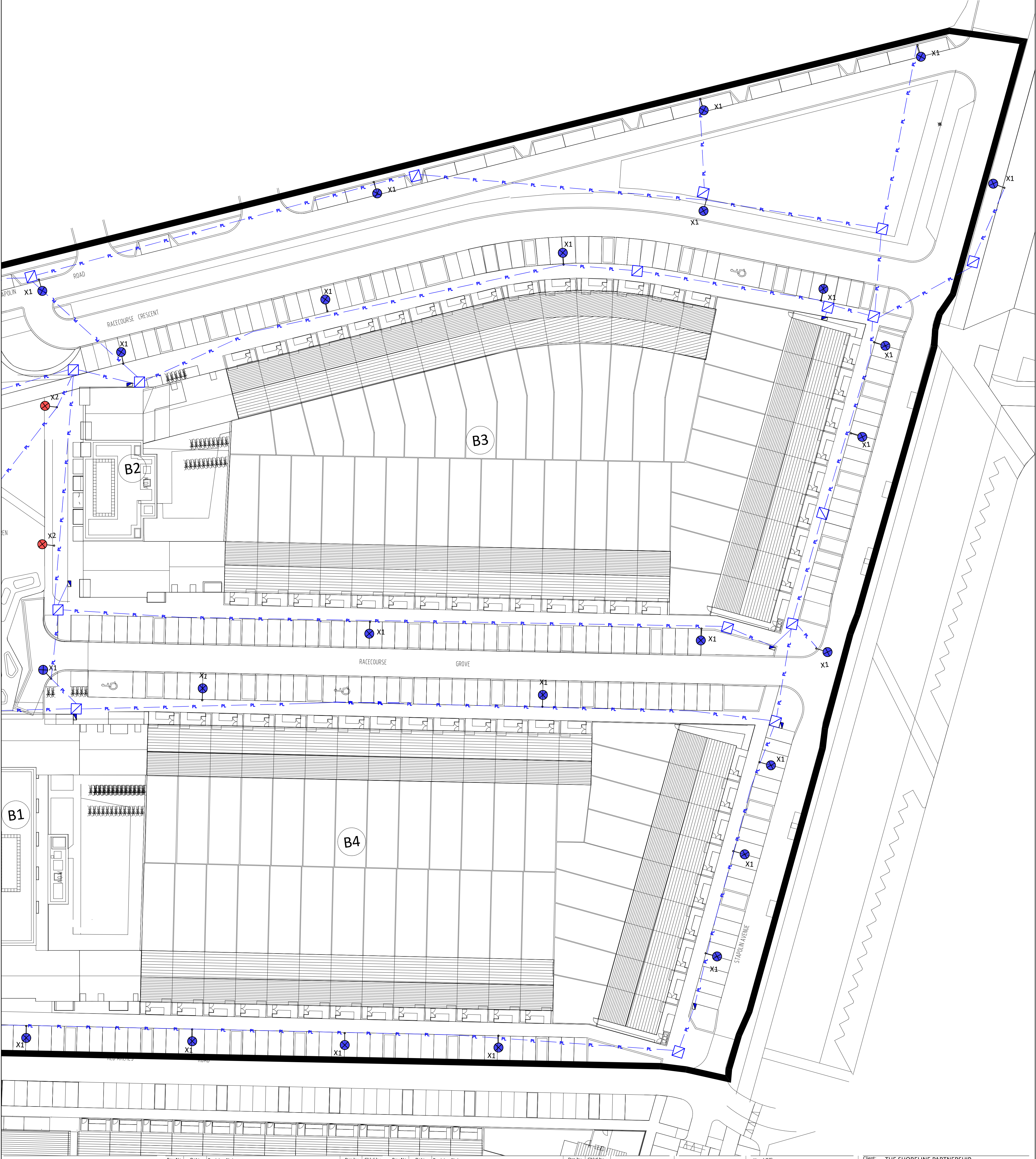
FCC x ESB TO AGREE EXACT LOCATION OF MINI PILLARS.  
HATCHED AREA'S - LIGHTING WITHIN IN THESE AREA'S  
TO BE AGREED WITH LANDSCAPE ARCHITECT

#### DRAWINGS NOTES:

1. LIGHTING TO BE SUPPLIED VIA A SOLAR TIME CLOCK WITHIN EACH PUBLIC LIGHTING MINI PILLAR.
2. A MAXIMUM OF 4No. LUMINAIRES PER CIRCUIT & 4No. CIRCUITS PER PUBLIC LIGHTING MINI PILLAR.
3. ALL COLUMNS TO BE 8 METRES HIGH WITH A 1 METRE OUTREACH BRACKET & SETBACK 1 METRE FROM KERB.
4. ALL COLUMNS TO BE HINGED & TO BE AT LEAST 1 METRE CLEAR OF ALL OVERHEAD HIGH VOLTAGE POWER LINES.
5. FOR SCHEDULES OF EQUIPMENT SEE SPECIFICATION.
6. THE COMPLETE INSTALLATION TO BE CO-ORDINATED WITH ALL OTHER SERVICES.

#### LEGEND OF SYMBOLS:

- PL PUBLIC LIGHTING MANIPILLAR  
MANHOLE/DRAWPIT  
2 No. 100mmØ RED PVC PUBLIC LIGHT DUCT  
AXIA 2.2 5167 - 40 NVSL219CT 370mA NW 230V with a mounting height of 8m along roadways.  
AXIA 2.1 5167 LED - 8 Nichia NVSL219CT 480mA NW 230V with a mounting height of 5m along parklands.  
AXIA 2.1 5167 LED - 4 Nichia NVSL219CT 680mA NW 230V with a mounting height of 5m along courtyards.  
AXIA 2.1 5187 LED - 16 Nichia NVSL219CT 480mA NW 230V with a mounting height of 5m along ramped access area.  
AXIA 2.1 5241 - 24 NVSL219CT 540mA WW 230V on 5 metre high pole for bat friendly lighting 42610 ET 25 G IPS 70W



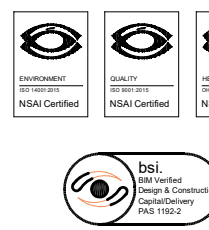
- FOR SETTING OUT REFER TO ARCHITECT'S DRAWINGS.
- THIS DRAWING TO BE READ IN CONJUNCTION WITH ALL OTHER ARCHITECTURAL AND ENGINEERING DRAWINGS AND ALL OTHER RELEVANT DRAWINGS AND SPECIFICATIONS.
- DO NOT SCALE THIS DRAWING. USE FIGURED DIMENSIONS ONLY.
- NO PART OF THIS DOCUMENT MAY BE REPRODUCED OR TRANSMITTED IN ANY FORM OR STORED IN ANY RETRIEVAL SYSTEM OF ANY NATURE WITHOUT THE WRITTEN PERMISSION OF O'CONNOR SUTTON CRONIN AS COPYRIGHT HOLDER EXCEPT AS AGREED FOR USE ON THE PROJECT FOR WHICH THE DOCUMENT WAS ORIGINALLY ISSUED.

Rev No.	Date	Revision Note
P01	09.10.20	ISSUED FOR COMMENT
P02	11.05.21	ISSUED FOR PLANNING

Drn by	Chkd by
I.F.	J.D.
I.F.	J.D.

Rev No.	Date	Revision Note

Drn by	Chkd by
--------	---------



Head Office,  
9 Prussia Street,  
Dublin 7,  
D07 KT57

TEL +353 (0)1 8682000  
e: [contactus@ocsc.ie](mailto:contactus@ocsc.ie)  
w: [www.ocsc.ie](http://www.ocsc.ie)

Dublin | London | Belfast | Galway | Cork | Birmingham



Client: THE SHORELINE PARTNERSHIP  
Project: PROJECT SHORELINE  
Title: BALDOYLE GA01

ELECTRICAL  
SITE LIGHTING PLANNING STAGE LAYOUT  
SHEET 3 OF 3

Code [Originator] Zone | Level | Type | Role | Number | Status | Revision  
R500: OCSC: GA01: XX : DR : E : 0005 | S4 | P02  
Date: 18.03.20 Scale: 1:250 @ A0 Drn by: J.F. Chkd by: J.D. Apvd by: Y.M.